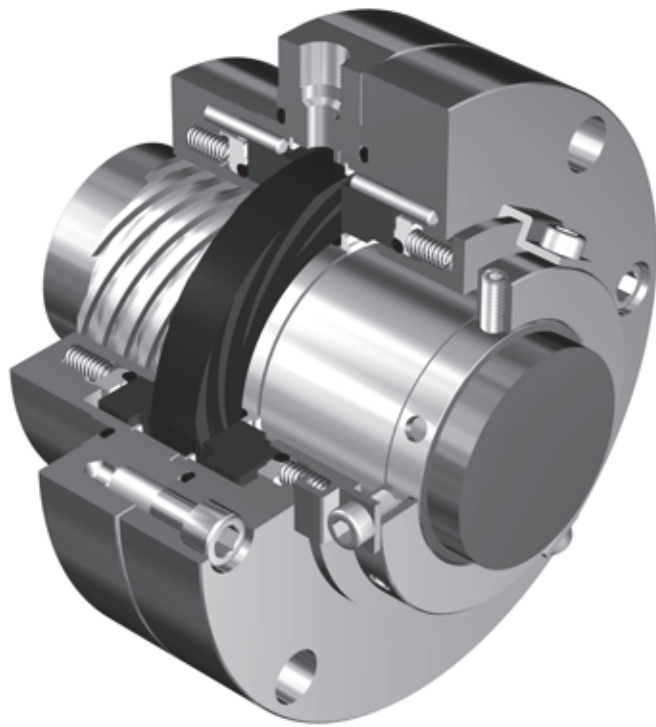
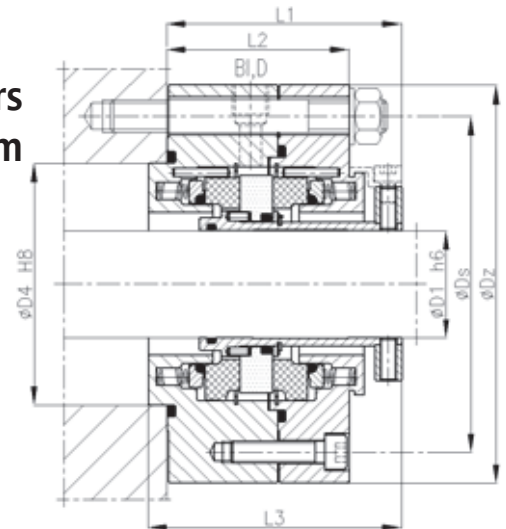
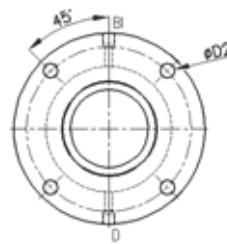


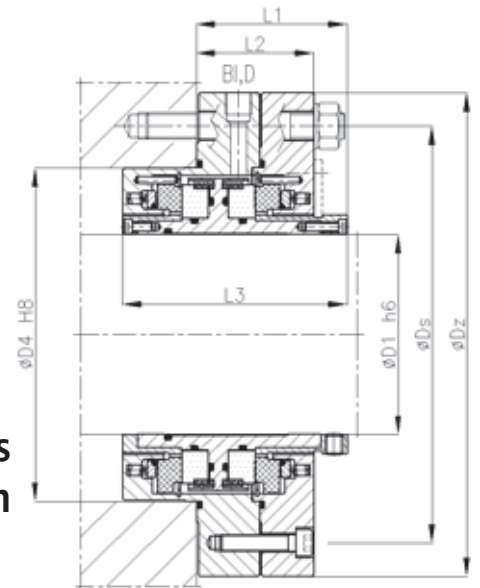
- double gas-lubricated seal ("face to face")
- cartridge design
- dependent on direction of rotation:
GK4 - clockwise,
GK3 - counterclockwise
- multi-spring
- requires a barrier gas supply
- non-contacting operation



For diameters
40 ÷ 80 mm



For diameters
90 ÷ 160 mm



Dimensions (mm)

D1	D2	D4	Ds	Dz	L1	L2	L3
40	14	90	125	150	87	67,5	94
50	18	100	140	170	87	67,5	94
60	18	120	160	190	87	67,5	94
70	18	130	170	200	87	67,5	94
80	18	140	180	210	87	67,5	94
90	22	160	205	240	85	67	125
100	22	170	215	250	85	67	125
110	22	180	225	260	85	67	125
120	22	200	250	290	90	70	134
130	22	210	260	300	90	70	134
140	22	220	270	310	90	70	134
150	22	230	280	320	90	70	134
160	22	240	290	330	90	70	134

Other dimensions are available in option. Please contact ANGA.

Application

GK4 seals are intended to use in pumps and compressors operating in explosive environment or handling toxic and hazardous substances. The main areas of its application are: chemical, petrochemical, refinery and coke industry, transportation of natural and industrial gases. Sealed substances could be gases or vapors of flammable or aggressive liquids, e.g ammonia, ethylene, acetone, hydrogen chloride, hydrogen sulphide, etc.

Materials

Part	Code
Rotating ring	A, B
Stationary ring	Q, U
Secondary, flexible seals	E, K, V
Spring	M
Other metal parts	G