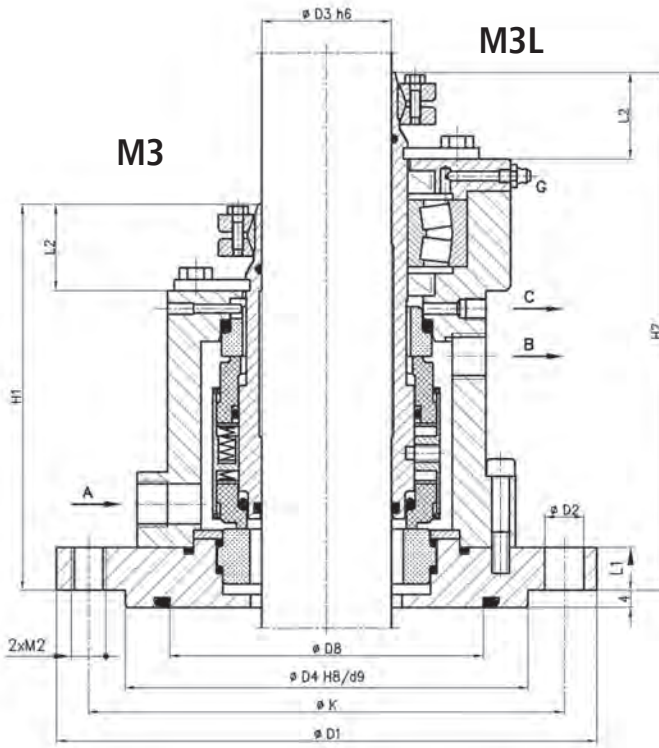


- Double mixer mechanical seal
- Balanced
- Dual directional
- Either without bearing (M3) or with integral bearing (M3L)

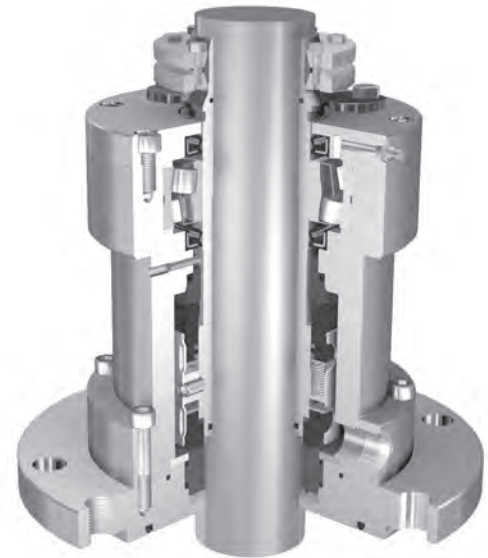
Operating limits*		
Pressure	p_{max}	2.5 MPa
Temperature	t_{max}	-20 °C do 200 °C
Speed	v_{max}	4 m/s

* - see note on page 3.



CONNECTIONS

- A – coolant inlet
 B – coolant outlet
 C – leakage outlet
 G – grease point



Materials

Part	Code
Rotating ring	A, B, Q
Stationary ring	Q, V
Secondary, flexible seals	P, V, E, K
Spring	G, M
Other metal parts	G, M

Application

Type M3, M3L mechanical seals are applied to seal top entry drives in agitators, mixers or blenders in cases when chemically aggressive and environmentally hazardous products are processed. The seals are adapted for operating with low-pressure installations of barrier or flushing-cooling liquids.

They can be made of materials that are approved for use in the pharmaceutical and food industries.

Dimensions (mm)

									M3	M3L		
D3	D1	N x D2	D4	D8	K	L1	L2	M2	H1	H2	A,B	C
30	175	4 x 18	110	70	145	20	40	M16	165	210	G3/8	G1/8
40	175	4 x 18	110	70	145	20	40	M16	170	220	G3/8	G1/8
50	240	8 x 18	176	135	210	20	40	M16	185	240	G1/2	G1/8
60	240	8 x 18	176	135	210	20	40	M16	185	240	G1/2	G1/8
70	240	8 x 18	176	135	210	20	45	M16	190	250	G1/2	G1/8
80	275	8 x 22	204	155	240	20	50	M20	190	270	G1/2	G1/8
90	275	8 x 22	204	155	240	20	50	M20	195	280	G1/2	G1/8
100	305	8 x 22	234	190	270	20	50	M20	200	275	G1/2	G1/8
110	305	8 x 22	234	190	270	20	55	M20	205	280	G1/2	G1/8
125	330	8 x 22	260	215	295	20	55	M20	210	295	G1/2	G1/8

Other dimensions are available as an option. Please contact ANGA.